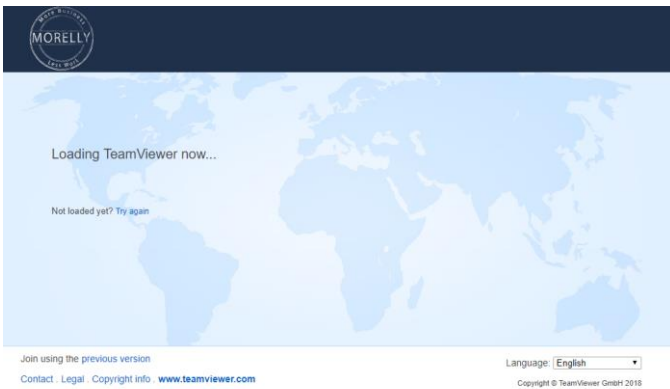
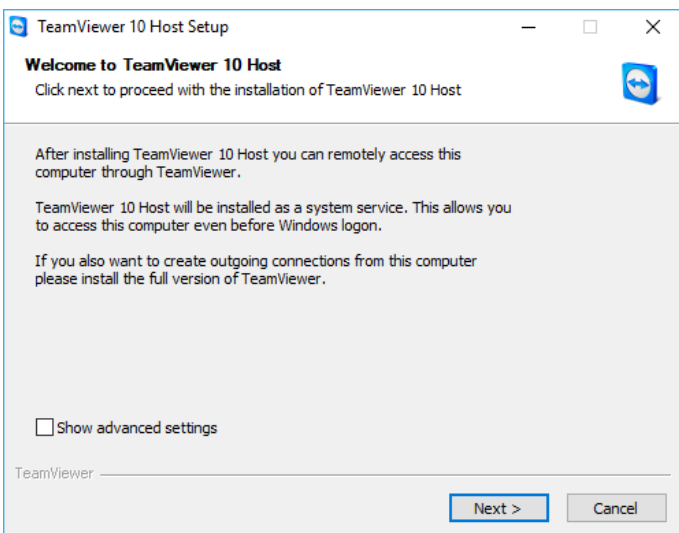


# Morelly® FullSupport

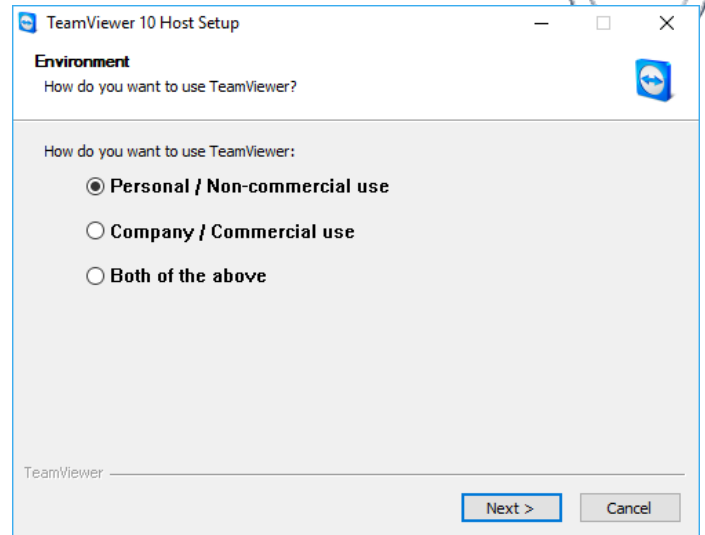
1. Download the file here:  
<https://898.tv/morellyfs>



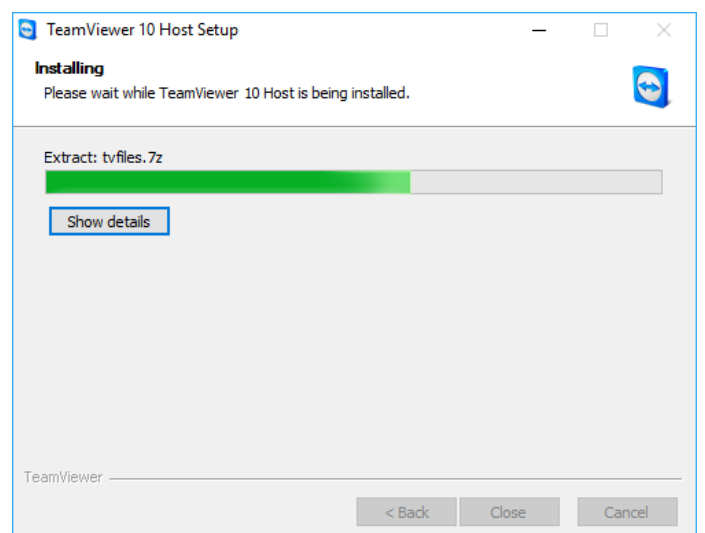
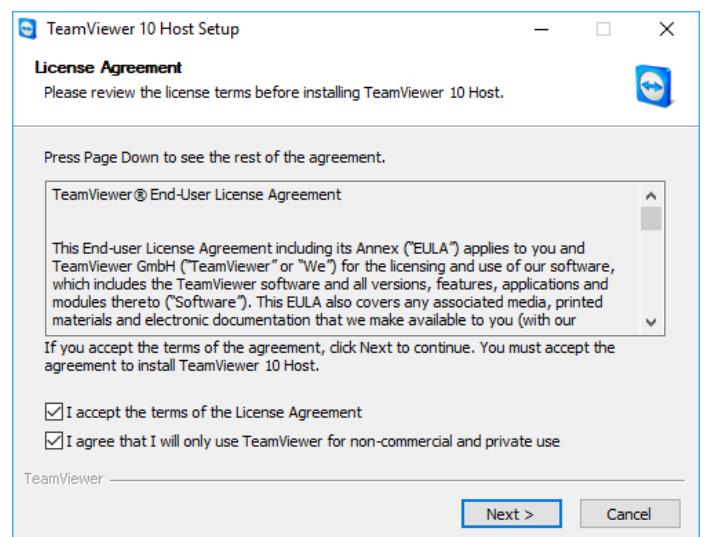
2. Open the downloaded file (from your downloads folder unless otherwise specified during download)
3. Select “Yes” if prompted
4. Ensure you are connected to your Morelly® ICT Support Representative via phone
5. Select “Accept” to the disclaimer
6. Select “Next”



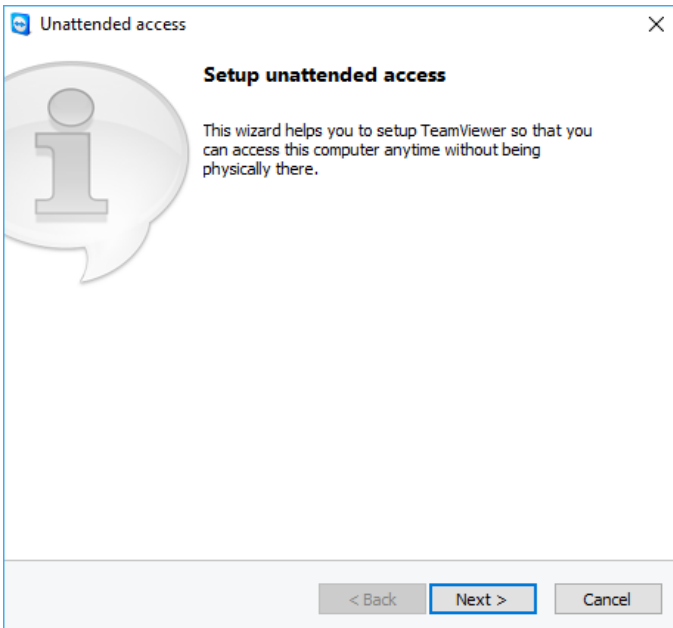
7. Select “Personal / Non-commercial use”



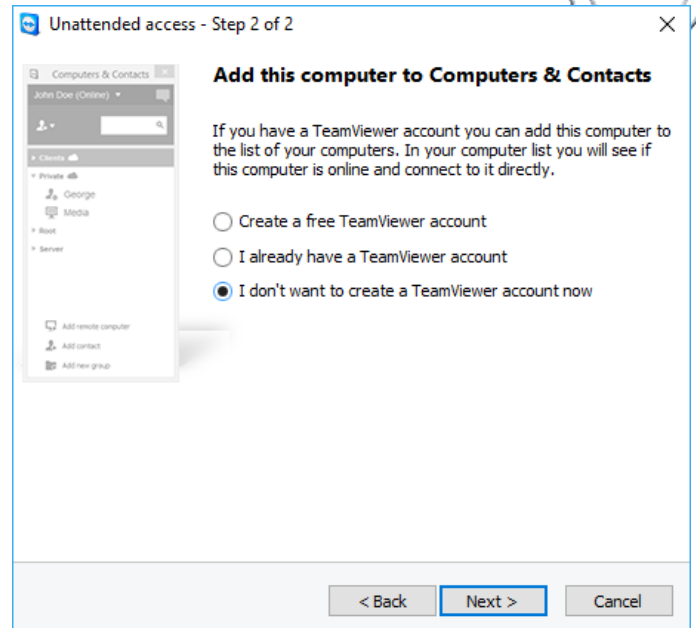
8. Check both of the boxes



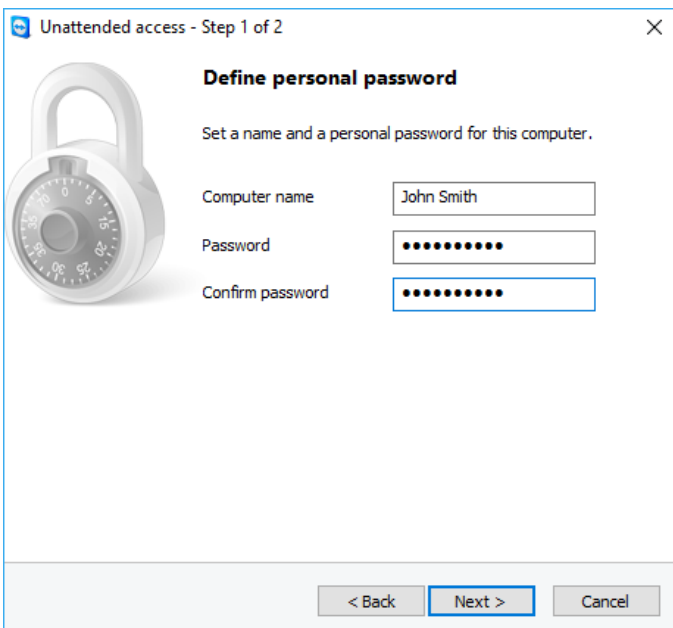
9. Select “Next” when prompted for “Setup Unattended Access”



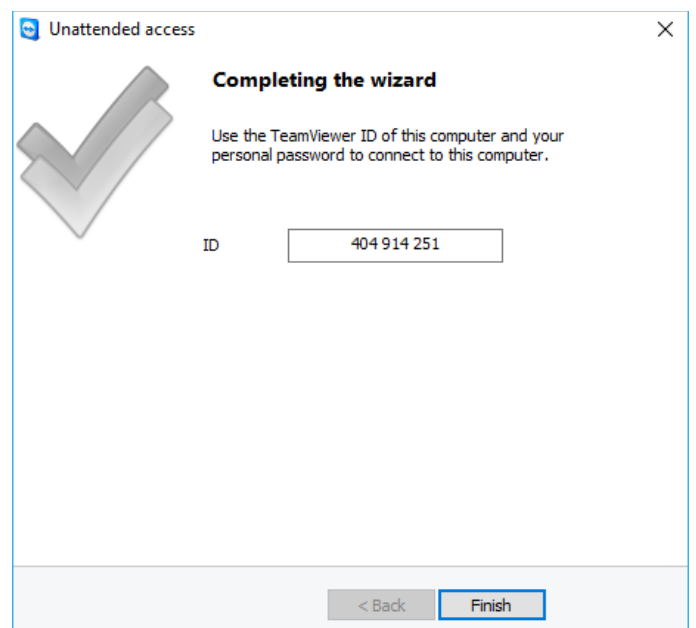
10. Enter Your Computer Name e.g. "John Smith"
11. Enter the Password "Morelly123"
12. Select Next



15. Share your ID with your Morelly® ICT Support Representative
16. Select "Finish"



13. Select "I don't want to create a Teamviewer account now"
14. Select Next



17. You're done!

